



WALNUT CREEK EXTENSION DISTRICT

February 2026

Upcoming Dates

February Dates

2 - Monday Fun Day - Dighton
2 - Lane Co. 4-H Council
3 - Ag Profitability Conference-Garden City
4 - 4-H Cloverbuds - Dighton
4 - 4-H on the 4th - For the Love of Ag
4 - Kristen program at Dighton Joy Center
5 - K-State Forage School - Dighton
9 - Rush Co 4-H Council - LaCrosse
9 - Rush Co Junior Leaders - The Real Colors of Leaders - 6 pm - LaCrosse
12 - Prescribed Burn Plan Writing - Ness City
12 - Lane YEC - Youth Entrepreneurship Challenge
13 - 4-H Day Entries DUE by Noon
12-13 - Women Grow the Farm - Manhattan, KS
18 - Ransom Senior Center Program - 12 noon
19 - Kristen Program at Ness Leisure Years @ Noon and Wheatview Apts - 1 pm
21 - District 4-H Club Days held in Ness City
23 - Walnut Creek District Board Meeting
25 - Staff meeting - Office Closed 9 am - 2 pm
25 - Managing Pastures for Livestock - Rush Center - 4:30pm - RSVP - 785-222-2615 Ext. 3
26 - Local Food Producer Workshop - Dodge City - Register by February 23rd

March Dates

7 - Junior Beef Producer Day - Manhattan
Register by February 13th

www.walnutcreek.ksu.edu


Lane County Office
144 S. Lane, Courthouse
P O Box 487
Dighton, KS 67839
620-397-2806

- Lacey Noterman, Director and Agriculture Ext. Agent - lnote@ksu.edu
- Chelsey Shapland, 4-H Program Assistant - cshapland@ksu.edu
- Kendyl Wells, Office Professional - kgwells@ksu.edu

Ness County Office
503 S Pennsylvania Ave
Ness City, KS 67560
785-798-3921

- Robyn Trussel, 4-H and Youth Agent - rdeines@ksu.edu
- Kristen Schmidt, Family Comm. Wellness - kbschmidt@ksu.edu
- Randae Rufenacht, Office Professional - rrufenac@ksu.edu

Rush County Office
702 Main, P O Box 70
Lacrosse, KS 67548
785-222-2710

- Jared Petersilie, Agriculture Ext. Agent - jaredp11@ksu.edu
 - Berny Unruh, Office Professional - bunruh@ksu.edu
- 

K-State Extension is committed to providing equal opportunity for participation in all programs, services and activities. Program information may be available in languages other than English. Language access requests and reasonable accommodations for persons with disabilities, including alternative means of communication (e.g., Braille, large print, audiotope, and American Sign Language), may be requested by contacting the event contact, Walnut Creek Extension District, four weeks prior to the start of the event at 620-397-2806 or email lnote@ksu.edu. Requests received after this date will be honored when it is feasible to do so. Language access services, such as interpretation or translation of vital information, will be provided free of charge to limited English proficient individuals upon request."

February is American Heart Month



Kristen Schmidt
Family and
Community
Wellness Agent
kbschmidt@ksu.edu

In 1964, President Lyndon B. Johnson issued the first proclamation declaring February American Heart Month. Each year this is a time to bring awareness on how to take steps to prevent this deadly disease. According to the American Heart Association, heart disease is a leading cause of death in the United States for both men and women.

Here are some tips you can take to help prevent heart disease:

- *Know your risk. Knowing your risk can help you make lifestyle changes.
- *Eat. Make heart healthy choices that include daily vegetables and less processed foods.
- *Watch your weight. Stay at a healthy weight for you.
- *Check your blood pressure and cholesterol. These are two main risk factors that could lead to heart disease.

Raising awareness is essential not only in the month of February, but also year-round.

It is also the perfect time to take training on how to perform Cardiopulmonary Resuscitation (CPR) and how to use an Automated External Defibrillator (AED) to help save lives. Cardiac arrest claims thousands of lives each year. CPR/AED classes can help you save a life when every minute counts.



2026 Local Food Producer Workshops

For farmers markets, producers, and small food businesses to learn about direct-to-consumer sales and other local marketing needs.

Feb. 6 - Olathe
Feb. 7 - Hutchinson
Feb. 20 - Holton
Feb. 26 - Dodge City

Feb. 27 - Oakley
Mar. 6 - Parsons
Mar. 10 - Beloit



COST: \$25



For additional details
and to register visit:

ksre-learn.com/food-producer-workshops

K-STATE
Research and Extension
Local Food Systems



Kansas Local Food Systems is
hosting Local Food Producer
Workshops in collaboration with the
Kansas Department of Agriculture
and Kansas SARE.

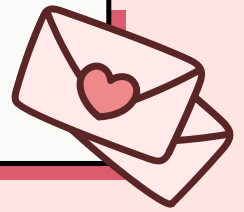
This institution is committed to providing equal opportunity for participation in all programs, services, and activities. Program information may be available in languages other than English. Language access requests are made by providing the name of the person with disabilities, including alternative means of communication (e.g., Braille, large print, and American Sign Language), may be requested by contacting the event coordinator. Materials that would pose a barrier to the event will be provided in accessible format. Requests received after the time will be forwarded when it is feasible to do so. Language access services, such as interpretation or translation of written materials, will be provided free of charge to limited English proficient individuals upon request. Kansas State University is an equal opportunity provider and employer.

2026 Local Food Producer Workshop

Local Food Producer workshops are hosted in collaboration with the Kansas Department of Agriculture and the Kansas Center for Sustainable Agriculture and Alternative Crops. These workshops are an opportunity for producers and small food businesses to learn more about selling their products through direct-to-consumer sales.

The cost to attend is \$25. This fee includes scale certification and lunch. Registration is available online or you can register at your local K-State Extension office. For more information check the following:
<https://www.ksre.k-state.edu/kansaslocalfoods/get-involved/workshops.html>

For additional information on LIEAP
contact Kristen at 785-798-3921



KANSAS STATE
UNIVERSITY

Extension
Walnut Creek District

LOW INCOME ENERGY ASSISTANCE PROGRAM

LIEAP can help pay your home heating bills!

Applications accepted
**Jan. 20, 2026—
March 31, 2026**

Applications **must** be received by DCF
by **5 p.m. on March 31, 2026.**

Qualifying households must:

- **not exceed household income limits**
- **be personally responsible** for the heating fuel costs payable either to the landlord, utility company, or a fuel vendor



Learn more about LIEAP
and apply online at
LIEAP.dcf.ks.gov.

INCOME GUIDELINES

Persons living at address	Maximum gross monthly income
1	\$ 1,956
2	\$ 2,644
3	\$ 3,331
4	\$ 4,019
5	\$ 4,706
6	\$ 5,394
7	\$ 6,081
8	\$ 6,769
each additional	\$ 688

Funding provided by the U.S. Department of Health & Human Services, Office of Community Services - Low Income Home Energy Assistance Program.

For more information or assistance in applying contact
Kristen Schmidt, Family and Community Wellness Agent, at
785-798-3921.

Check this website for more information:

<https://www.dcf.ks.gov/services/ees/Pages/EnergyAssistance.aspx>

2026 Kansas Custom Rates Survey AND 2026 Input Costs Survey



Jared Petersilie
Extension Agent
Animal Sciences
Farm Management
jaredp11@ksu.edu

The Land Use Survey Office at Kansas State University is seeking feedback for the 2026 Kansas Custom Rates Survey and 2026 Input Costs Survey.

The surveys are voluntary, anonymous and confidential. Please answer any portion of the questionnaires where you have knowledge of in your area during 2025-2026. If you are unable to complete the survey online, but wish to participate, please contact us to receive a written survey or to complete the survey over the telephone.

The surveys will provide reliable, accurate information to Kansas farmers, ranchers and the agricultural community. Each survey should take less than 15 minutes to complete.

2026 Kansas CUSTOM RATES Survey

KDA is seeking feedback on rates paid for agricultural custom work in Kansas, including charges for custom harvesting, land work, haying, feed preparation and machinery rental.

To complete the survey before March 31, please visit:

<https://tinyurl.com/custom26>

OR: https://kstate.qualtrics.com/jfe/form/SV_9zgz8qfBBLQILpc

2026 Kansas INPUT COSTS Survey

This survey collects information on input costs in 2025-2026 for Kansas agricultural production, including average costs for fertilizer, herbicide, insecticide, and seed.

To complete the survey before May 31, please visit:

<https://tinyurl.com/input26>

OR: https://kstate.qualtrics.com/jfe/form/SV_bIWjyM3LXy1R090

Please respond to the survey that applies to you. Your input is crucial to provide reliable, accurate information and very important to help the Kansas agricultural industry to make better decisions. We sincerely appreciate your responses.

Leah Tsoodle

Director, Land Use Survey Office

ltsoodle@ksu.edu

785.532.3509

Department of Agricultural Economics,
Kansas State University
Manhattan, KS 66506



Managing Hay Quality for Cows, KSU Beef Tips



Cattle operations typically produce or have access to several different types and qualities of hay. Strategically managing hay inventories requires an accurate assessment of the nutrient content of the forage(s) and a basic of understanding of cow nutrient requirements. Our objective is to match the forage resources to the nutrient demands of the cowherd and avoid under/over-supplying nutrients (i.e., energy and protein).

The first step in managing a hay inventory is to sort hay into “Lots”. This is essentially sorting hay into groups that will become the “units” of hay that will be sampled and submitted to a laboratory for analysis. Hay “Lots” are generally based on forage type (grass, alfalfa, forage sorghum) and then by cutting, field or source. Hay should be stacked by “Lot” and labelled in manner that can easily be identified. Larger operations or hay brokerages will commonly use spray paint to identified individual “Lots” of hay. Additionally, any “high risk” forages that may contain weeds or elevated concentrations of anti-nutritional components (nitrates, mold etc.), should also be segregated into “Lots” as well. I generally recommend that any potentially “high risk” forages be stacked in a pre-determined area away from other hay so they may easily be identified.

Once hay has been grouped into “Lots” the next step is to obtain a representative sample of the bales. Obtaining a representative sample is essential and sampling is an often-overlooked source of error. Commercial labs use less than a gram of sample for an individual analysis. Thus, it is imperative that the grams of sample used in those analytical procedures represent the tons of hay on the farm. A general rule of thumb is that 20% of the bales in the “Lot” should be sampled using a forage probe, which takes a core or cross-section of the bale. Using a forage probe ensures a consistent sample with the same leaf-to-stem ratio and they can be checked out from each Walnut Creek Dist. Office.

If the hay was put up under less-than-ideal harvest conditions or contains a large proportion of weeds, mold may be a concern. A generic mold count may be requested. This analysis does not identify specific molds but simply reports the concentration of mold within the forage sample. In addition, if the forage is a known nitrate accumulator (forage sorghums, crop residues, cereal hay), contains weeds that accumulate nitrates (kochia, pigweed, Johnsongrass) or was stressed (i.e. drought, hail damage) prior to harvesting, a nitrate analysis is recommended. Nitrates and mold can be managed by blending forages to dilute out the mold or nitrates. However, the concentrations must be known to accurately dilute the mold and nitrates to safe concentrations. Mold counts or nitrate analyses are usually offered as separate analytical procedures and must be requested separately for additional fees. We keep analysis bags on hand for all major labs and can assist in filling out the information to make the most of the results.

Once we have the results of the forage analysis, producers should consider managing hay on their operations by placing hay in 4 management/feeding categories based on forage quality and the approximate nutrient requirements of beef cows. These 4-hay management categories are I recommend are outlined below.

- 1).** Low Quality Hay. Forage contains less than 7% crude protein and an ADF value greater than 45%. Mature grass hays, and crop residues would be common forages in this category. These forages are often used to replace dormant native range and in some cases are capable of meeting the nutrient requirements of dry, bred, cows post weaning. Energy supplementation may be required, especially if forage NDF content limits intake.
- 2).** Moderate Quality Hay. Forage contains 8-15% crude protein and approximate ADF values of 40-45%. Cool season grass hays, cereal grain hay, and forage sorghum fit into this category if harvested at the appropriately. These forages match the nutrient requirements of Gestating cows (2nd and 3rd Trimester).
- 3).** High Quality Hay. Forage contains more than 16% crude protein and approximate ADF values from 31-40%. Alfalfa and most legume hays would be represented in this category. The nutrient content of forages in this category are sufficient to meet or exceed the nutrient requirements of cows during most production phases. These forages are often used supplement grazed forages or fed in combination with lower quality forages to meet cow requirements. These forages are often best utilized post-calving when cow nutrient requirements are greatest.
- 4).** High Risk Hay. Forages contain potentially dangerous or toxic levels of nitrate, molds etc. The concentrations of these compounds in these bales are high enough that they must be diluted to safe levels. These forages may be fed in combination with other feedstuffs or intake must be limited. Consulting with an Extension specialist or nutritionist is advised when working with hay in this category.

Strategically managing hay quality comes down to the old adage “don’t guess...test”. A forage nutrient analysis is essential. It is imperative to know the dry matter, crude protein, energy, calcium and phosphorous content forages. The fiber fractions (ADF, NDF) are used to estimate forage intake and digestibility. Although not essential ADF and NDF values allow us to more accurately predict animal performance and avoid under/over-supplying nutrients.

**2026 K-State Garden Hour
Webinar Series
Feb 4, 2026
Honey Bee Management
and
Key Floral Resources in Kansas**



Lacey Noterman
District Director
Agronomy/
Horticulture
lnote@ksu.edu

Honey bee behavior is influenced by the seasons and the availability of flowering plants. Beekeepers must perform various tasks throughout the year to raise healthy and productive colonies.

Join Ryan Engel, Golden Prairie District Horticulture Agent, to learn more about standard beekeeping management practices and essential food sources for honey bees in Kansas.

Sign up for the 2026 webinars here: https://ksu.zoom.us/webinar/register/WN_lXljvtedRu-pvfFA6Kzvxw#/registration

Women Grow the Farm

Formerly the “Women Managing the Farm” Conference. Check out the main speakers and a great choice of breakout sessions at this website: <https://www.womengrowthefarm.com/agenda>



MANHATTAN, KS | FEBRUARY 12TH & 13TH

Keynote speakers:

- Erica Leubner
Farm Business
Consultant
- Marilyn Vetter
President & CEO
Pheasants Forever
& Quail Forever
- Janice Person
CEO & Founder
Grounded
Communications

Breakout Sessions:

- Succession
Planning
- Financial
Planning
- And many more



WHAT'S HAPPENING

For the Love of Agriculture

What is your favorite part about
Agriculture?

Is it the of animals, the crops,
gardening or something else?

Send in a 30 second video to
share your LOVE of
Agriculture.

Send Videos to
rdeines@ksu.edu or 785-798-
5020

Dighton Schools YEC Challenge

The Youth Entrepreneurship Challenge State Competition (YEC State) is for the Advancement of Entrepreneurship to promote entrepreneurship and small business development in Kansas. The competition is for student-created, managed, and owned ventures. On February 12th Dighton Schools will host their first YEC Challenge. This is a great opportunity for youth to build on their dreams and creativity and show their talents and they start a business venture of their own.



**Reminder: WCED 4-H Club
Days will be held
Saturday, February 21st at the
Ness City High School
The public is invited to attend
this event and
support our 4-H members
as they present their
communications,
public speakings, digital
presentations, music and talent
numbers**

Citizenship in Action

We have 3 WCD Youth participating in Citizenship in Action where they will learn about the laws and rules that affect their lives? These youth will travel to Topeka February 15-16 and The purpose of the event is for Kansas youth to learn how the state legislative process works and how their voice and participation in decision-making can make a difference in their local communities. The legislative visit will not only familiarize youth with the capitol building, but will also show them how they can affect the legislative process. Watch for upcoming videos.



**“All you need is love. But a little chocolate
now and then doesn’t hurt.” —Charles M. Schulz**

KANSAS CATTLE WOMEN

April 10th Networking Event

Join us for an evening designed to connect, support, and strengthen relationships among cattlemen from across the state of Kansas. The night will include intentional networking, a featured guest speaker, door prizes, and time to connect with fellow members and guests in a relaxed, welcoming setting.

A cash bar will be available, along with hors d'oeuvres.

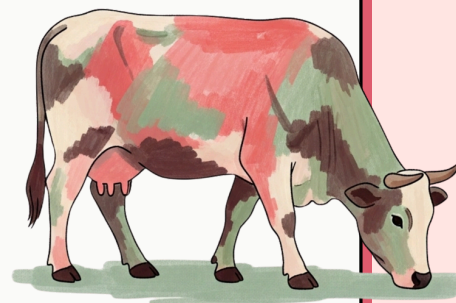
Whether you're new to the organization or a long-time member, this event is an opportunity to build real connections, exchange ideas, and spend an evening in community with women who share a passion for agriculture and leadership.

Doors Open at 5:30, program starts at 6:30 and bar stays open until 9pm

Union Hall - 328 Poyntz Ave, Manhattan, KS 66502

What's included:

- Event admission and RSVP confirmation
- Networking with cattlemen from across Kansas
- Guest speaker presentation
- Hors d'oeuvres
- Door prizes



<https://www.kscattlewomen.com/>

Kansas Cattle Women Scholarship

Supporting the next generation of women in agriculture.

The Kansas Cattle Women Scholarship supports young women pursuing education and careers connected to agriculture and the beef industry. Each year, we award scholarships to students who demonstrate leadership, advocacy, and a commitment to the future of agriculture in Kansas.

Scholarship Details

Awards: Two scholarships of \$500 each

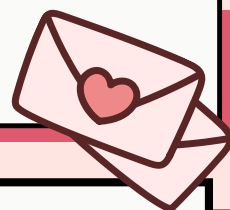
Recipients: One high school senior and one college student

Application Deadline: April 1

**Recognition: April 10 Kansas Cattle Women event in Manhattan, Kansas
(attendance encouraged, not required)**



THRIVING INDICATORS



What This Is

The goal of 4-H Beyond Ready is to develop a generation of young people who are healthy, productive, and engaged. Beyond Ready is grounded in Positive Youth Development, which promotes youths' social, emotional, and cognitive abilities, as well as the development of positive habits of mind and behaviors important for lifelong success. These qualities are represented by the Thriving Indicators in the 4-H Thriving Model. Thriving youth are Beyond Ready!

- 1. Facilitating Openness to Challenge and Discovery:** Helping youth be open to challenge and discovery fosters personal qualities that are critical to success in life, such as open-mindedness, perseverance, and industriousness. Youth who are open to challenge are willing and able to tackle complex problems with confidence – a valuable aspect of readiness for work and life.
- 2. Encouraging a Growth Mindset:** A growth mindset means that youth believe their abilities are not fixed in stone, but rather can get better with effort. Having a growth mindset enables youth to work hard at things that are difficult, because they know that with effort, they are able to accomplish many things. A growth mindset promotes important qualities such as originality, creativity, and curiosity – traits that can lead to flexibility, adaptability, and innovation. These are personal qualities often sought by employers.
- 3. Developing a Hopeful Purpose:** Purpose is an abiding intention to achieve a long-term goal that is both personally meaningful and makes a positive mark on the world. Youth with a sense of purpose are also more likely to feel connected to others, and thus less lonely. Having a sense of purpose provides a source of hope and optimism about the future, and leads to young adults who have a positive identity and sense of self – essential qualities of readiness.
- 4. Promoting a Prosocial Orientation:** A prosocial orientation refers to a young person's tendency to think, feel, and behave in ways that benefit others and contribute positively to social relationships and community well-being. This includes behaviors such as kindness, generosity, respecting and cooperating with others, showing empathy, and volunteering. Youth with a prosocial orientation are often motivated by concern for others, a sense of moral responsibility, and the desire to maintain positive social connections. Prosocial development is essential for life beyond high school and success in work and life.
- 5. Fostering Transcendent Awareness:** The word transcend means to "go beyond" or "rise above." When we encourage youth to connect with something bigger than themselves, we are helping them develop transcendent awareness. Developing transcendent awareness through connection to something other than self helps youth experience and understand the importance of wonder, integrity, personal virtue, moral reasoning, gratitude, and fairness.
- 6. Supporting Positive Emotionality:** Positive emotionality is a young person's ability to identify and manage their emotions in ways that support having a positive and optimistic outlook on life. The ability to identify and manage emotions is linked to long-term well-being. Youth who can manage their emotions effectively are able to work well with others, respect differences, and share leadership. These qualities of self-control and social intelligence are vital to success in work and life.
- 7. Promoting Goal Setting and Management:** Setting goals helps a young person determine a positive direction and meaning in life. Goal-directed habits and behaviors are linked to health and success. When these skills are developed early in life they tend to endure throughout adulthood. Goal setting and management skill development contributes to important readiness skills, such as critical thinking, perseverance, flexibility, and adaptability.



K-STATE FORAGE SCHOOLS

DATES & LOCATIONS:

February 3 - 9:30 am

WaKeeney
Trego County Fair Grounds

February 3 - 3:00 pm

Sylvan Grove
Livestock Commission Building
Supper following thanks to sponsors
Bank of Tescott and Central Valley Ag

February 4 - 9:30 am

Stockton
Harding Hall 4-H Building

February 4 - 5:00 pm

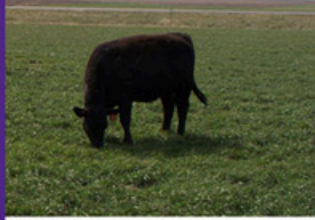
Atwood
Rawlins Co. 4-H Building

February 5 - 9:00 am (MT)

Sharon Springs, CAB

February 5 - 5:00 pm

Dighton
Lane Co. 4-H Building



Forages can fit in many operations. Join us to hear about recent research in winter and summer forages.

SPEAKERS:

Augustine Obour
K-State Soils Specialist at Hays
Logan Simon, K-State Southwest Area Agronomist

There is no cost to attend

REGISTER TO ATTEND

<https://bit.ly/ForageSchools>

Please register by February 2



2 CCA Credits have been applied for in Crop Mgmt

Kansas State University is committed to making its services, activities and programs accessible to all participants. If you have special requirements due to physical, vision or hearing disability, contact Jeanne Falk Jones, K-State Agronomist for 785-462-6281.

KANSAS STATE UNIVERSITY

Extension



CROPtalk

Broadcast Live from 12:00 – 1:00 pm CT
via Zoom and YouTube

February 10

Understanding Flex Leases

Robin Reid, K-State Extension Ag Economist

February 17

Available Soil Water At Planting and Related Management

John Holman, K-State Extension Cropping Systems Agronomist

Augustine Obour, K-State Professor of Soil Science

February 24

Wheat Conditions & Breeding Efforts on Mosaic Viruses

Allen Fritz, K-State Wheat Breeder

March 3

Fungicide Applications in Corn and Sorghum

Rodrigo Onofre, K-State Extension Plant Pathologist

March 10

What's Bugging You? Insects to Watch for in the Field

Anthony Zukoff, K-State Entomologist



Scan me!

Register to attend at
www.bit.ly/KSUCropTalk

Links for joining will be sent after registration.
One Certified Crop Advisor (CCA) Credit per session has been applied for.

KANSAS STATE UNIVERSITY

Extension

If you have questions, please contact your local Extension agent or the K-State Northwest Research and Extension Center at 785-462-6281.

Kansas State University is an equal opportunity provider and employer.

2026 K-STATE JUNIOR BEEF PRODUCER DAY

Program

Join us on March 7, 2026, for the biennial K-State Junior Beef Producer Day! This event is a fun-filled educational day for youth, parents, beef project leaders, ag teachers, and extension agents to expand their knowledge of youth beef projects. Presentations by K-State faculty, staff, K-State livestock judging team members, students, and guest speakers will cover topics that may include selection, nutrition, daily care, meat science, reproduction, health, grooming, and showmanship. An optional YQCA certification class will be offered at the end of the day. A complimentary lunch and t-shirt will also be provided for those who register by the deadline. The registration fee is \$20 per person for those who sign up by February 13. The fee will increase to \$30 per person for those who register after the deadline. Only those who register by February 13 will receive a t-shirt. This is a family event! Anyone attending the event must register, including youth and adults.



Tentative Schedule

8:00AM Check-in
9:00AM Welcome
9:15AM Project Selection
10:00AM Morning Breakout Sessions
-Nutrition, Meat Science, Daily Care, Grooming & Fitting
Lunch
1:00PM Afternoon Breakout Sessions
-Health, Reproduction, Showmanship
3:15PM Dismissal
3:30PM Optional YQCA Class

Registration

Deadline: February 13

Fee: \$20/person

Registration Link: <https://bit.ly/BeefJrProducer>

Late Registration: \$30/person (after February 13)

*All attendees must register, including youth & adults.

**Late registrants will not receive a t-shirt.



Scan Me!

Questions?
Lexie Hayes

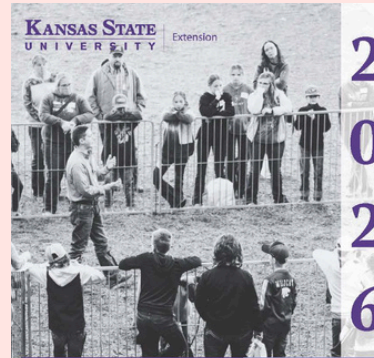
785.532.1264 adhayes@ksu.edu

Registration Due
February 13



K-State, County Extension Councils, Extension Districts, and U.S. Department of Agriculture Cooperating. All educational programs and materials available without discrimination on the basis of race, color, religion, national origin, sex, age, or disability.

KANSAS STATE UNIVERSITY
Extension



2026 K-State Junior Sheep Producer Day

Date

4.11.2026

Manhattan, KS



Scan Me!

Registration

Due: 3.20.2026

Cost: \$20/person

<https://bit.ly/SheepJrProducer>

*All adults & youth must register to attend.

**Only those registered by 3/20/26 will receive a t-shirt.

***Late registration is \$30/person.

Questions

Lexie Hayes



785.532.1264



adhayes@ksu.edu

Program

Join us for the biennial K-State Junior Sheep Producer Day on Saturday, April 11, 2026. Presentations will be provided by featured guests, as well as K-State faculty, staff, and students. This event will be an educational day of activities in which youth, parents, extension agents, ag teachers, and sheep project leaders can increase their knowledge of youth sheep project selection and management. A variety of topics will be shared, including an optional YQCA certification at the end of the day. All ages and skill levels are invited! Lunch and a t-shirt are included. The registration fee is \$20/person for those who sign up by March 20 or \$30/person for those who register after that date. Only those who register by the deadline will receive a t-shirt. This is a family event! Anyone attending, including both youth and adults, must register. There will be an optional tour of the sheep and meat goat center offered on Friday evening and Saturday after Jr. day.

Tentative Schedule

Friday, April 10
5:00-7:00PM Optional Tour of Sheep & Goat Center
Saturday, April 11
8:00AM Check-in
9:00AM Welcome
9:15AM Selection
10:00AM Nutrition
10:45AM Morning Breakout Sessions
-facilities & equipment, reproduction, project management purchase to show
Lunch
1:00PM Health
1:45PM Afternoon Breakout Sessions
-wool, showmanship, clipping & grooming
3:45PM Dismissal
4:00PM Optional YQCA Class
4:00-6:00PM Optional Sheep & Goat Center Tour



K-State, County Extension Councils, Extension Districts, and U.S. Department of Agriculture Cooperating. All educational programs and materials available without discrimination on the basis of race, color, religion, national origin, sex, age, or disability.

